



blood

2014 123: 3873-3886

doi:10.1182/blood-2014-01-548776 originally published
online March 24, 2014

Practice guidelines for the diagnosis and management of microcytic anemias due to genetic disorders of iron metabolism or heme synthesis

Albertine E. Donker, Reinier A. P. Raymakers, L. Thom Vlasveld, Teus van Barneveld, Rieneke Terink, Natasja Dors, Paul P. T. Brons, Nine V. A. M. Knoers and Dorine W. Swinkels

Updated information and services can be found at:

<http://bloodjournal.hematologylibrary.org/content/123/25/3873.full.html>

Articles on similar topics can be found in the following Blood collections

[CME article](#) (104 articles)

[Red Cells, Iron, and Erythropoiesis](#) (560 articles)

[Review Articles](#) (510 articles)

Information about reproducing this article in parts or in its entirety may be found online at:

http://bloodjournal.hematologylibrary.org/site/misc/rights.xhtml#repub_requests

Information about ordering reprints may be found online at:

<http://bloodjournal.hematologylibrary.org/site/misc/rights.xhtml#reprints>

Information about subscriptions and ASH membership may be found online at:

<http://bloodjournal.hematologylibrary.org/site/subscriptions/index.xhtml>

Review Article

CME Article

Practice guidelines for the diagnosis and management of microcytic anemias due to genetic disorders of iron metabolism or heme synthesis

Albertine E. Donker,¹ Reinier A. P. Raymakers,² L. Thom Vlasveld,³ Teus van Barneveld,⁴ Rieneke Terink,¹ Natasja Dors,⁵ Paul P. T. Brons,⁶ Nine V. A. M. Knoers,⁷ and Dorine W. Swinkels¹

¹Department of Laboratory Medicine, Radboud University Medical Center, Nijmegen, The Netherlands; ²Department of Hematology, University Medical Center Utrecht, Utrecht, The Netherlands; ³Department of Internal Medicine, Bronovo Hospital, The Hague, The Netherlands; ⁴Netherlands Association of Medical Specialists, Utrecht, The Netherlands; ⁵Department of Pediatrics, Catharina Hospital, Eindhoven, The Netherlands; ⁶Department of Pediatric Hemato-Oncology, Radboud University Medical Center, Nijmegen, The Netherlands; and ⁷Department of Medical Genetics, University Medical Center Utrecht, Utrecht, The Netherlands

During recent years, our understanding of the pathogenesis of inherited microcytic anemias has gained from the identification of several genes and proteins involved in systemic and cellular iron metabolism and heme syntheses. Numerous case reports illustrate that the implementation of these novel molecular discoveries in clinical practice has increased our understanding of the presentation, diagnosis, and

management of these diseases. Integration of these insights into daily clinical practice will reduce delays in establishing a proper diagnosis, invasive and/or costly diagnostic tests, and unnecessary or even detrimental treatments. To assist the clinician, we developed evidence-based multidisciplinary guidelines on the management of rare microcytic anemias due to genetic disorders of iron metabolism and heme synthe-

sis. These genetic disorders may present at all ages, and therefore these guidelines are relevant for pediatricians as well as clinicians who treat adults. This article summarizes these clinical practice guidelines and includes background on pathogenesis, conclusions, and recommendations and a diagnostic flowchart to facilitate using these guidelines in the clinical setting. (*Blood*. 2014;123(25):3873-3886)

Medscape Continuing Medical Education online

This activity has been planned and implemented in accordance with the Essential Areas and policies of the Accreditation Council for Continuing Medical Education through the joint providership of Medscape, LLC and the American Society of Hematology.

Medscape, LLC is accredited by the ACCME to provide continuing medical education for physicians.

Medscape, LLC designates this Journal-based CME activity for a maximum of 1.0 AMA PRA Category 1 Credit(s)[™]. Physicians should claim only the credit commensurate with the extent of their participation in the activity.

All other clinicians completing this activity will be issued a certificate of participation. To participate in this journal CME activity: (1) review the learning objectives and author disclosures; (2) study the education content; (3) take the post-test with a 75% minimum passing score and complete the evaluation at <http://www.medscape.org/journal/blood>; and (4) view/print certificate. For the CME questions, see page 4005.

Disclosures

Nancy Berliner, Editor, received grants for clinical research from GlaxoSmithKline. The authors and CME questions author Laurie Barclay, freelance writer and reviewer, Medscape, LLC, declare no competing financial interest.

Learning objectives

1. Describe management of iron refractory iron-deficiency anemia resulting from defects in *TMPRSS6*, based on a review.
2. Describe management of hypotransferrinemia resulting from defects in *TF*.
3. Describe management of sideroblastic anemia resulting from defects in *SLC25A38*.

Release date: June 19, 2014; Expiration date: June 19, 2015

Introduction

Anemia in children, adolescents, and adults is commonly encountered in general clinical practice. There are multiple causes, but with a thorough history, physical examination, and limited laboratory evaluations, a specific diagnosis can often be

established. A standard diagnostic approach is to classify anemia as microcytic (mean corpuscular volume [MCV] <80 fL), normocytic, or macrocytic (MCV >98 fL). Microcytic anemias are primarily caused by nutritional iron deficiency, iron loss

resulting from gastrointestinal disease, iron malabsorption, hemoglobinopathies (including some thalassemia syndromes), and severe anemia resulting from chronic disease. Normocytic anemia can be caused by hemolysis, anemia resulting from chronic disease, or bone marrow pathology. Macrocytic anemias are often caused by toxic agents such as alcohol, folic acid and/or vitamin B12 deficiency or, less frequently, by myelodysplastic syndrome.

However, for some patients with microcytic anemias, the cause remains unexplained by the above-mentioned categorization. In these patients, elevation of ferritin and/or transferrin saturation (TSAT) or low TSAT in combination with low-normal ferritin levels ($>20 \mu\text{g/L}$) suggest a genetic disorder of iron metabolism or heme synthesis. Family history, an anemia that is refractory or incompletely responsive to iron supplementation, and features such as neurologic disease and skin photosensitivity may also be indicative of these disorders.

During recent years, defects in genes with roles in systemic and cellular iron metabolism and heme synthesis have been identified as being involved in the pathogenesis of these genetic anemias.¹⁻⁴ We recommend integrating these clinical and molecular insights into daily practice to avoid unnecessary delay in diagnosis, invasive or costly diagnostic tests, and harmful treatments. Importantly, in some genetic anemias, such as the sideroblastic anemias, iron overload is of greater consequence than the anemia itself.^{3,5} Unrecognized tissue iron loading might lead to severe morbidity and even mortality, underscoring the need for accurate and timely diagnosis of these disorders.

In this article, we present evidence-based multidisciplinary guidelines for the diagnosis and treatment of 12 disorders of microcytic anemia that result from defects in 13 different genes and that lead to genetic disorders of iron metabolism and heme synthesis. We included the disorder associated with a defect in *SLC40A1* (ferroportin-1) in these guidelines because in animal models, mutations in this gene cause a microcytic anemia,⁶ and narrative reviews classified the related human anemia as microcytic,¹ despite the fact that our literature review showed that microcytic anemia is rarely reported in these patients. We also included (normocytic) patients with X-linked dominant protoporphyria (XLDPP), because this disorder is a variant of erythropoietic protoporphyria (EPP), a disease in which patients present with microcytic anemia. We describe the methodology we used, provide a short and illustrated introduction to iron homeostasis (Figure 1),^{2,7} and briefly discuss pathogenesis, epidemiology, clinical presentation, diagnosis, and treatment. We present (1) case tables listing characteristics of the individual patients described in the literature (supplemental Data 1 on the *Blood* Web site), except for patients with loss-of-function (LOF) defects in *ALAS2* and defects in *SLC40A1*, *UROS*, and *FECH* because of their relatively high prevalence; (2) evidence-based conclusions and related references (supplemental Data 2); (3) recommendations that include advice on family screening (Table 1)^{8,9}; and (4) results of literature analysis on prevalence of anemia in patients with defects in *SLC40A1* (supplemental Data 3). To help the clinician, we have included a table that summarizes the characteristics of the disorders (Table 2) and a flowchart (Figure 2) to aid in the diagnosis of the relevant diseases.

Methodology

These guidelines have been developed to assist clinicians and patients in the clinical decision-making process for rare anemias that are due to genetic disorders of iron metabolism and heme synthesis by describing a number of

generally accepted approaches for the diagnosis and treatment of these disorders.

To develop these evidence-based guidelines, the working group adopted the methodology described in the Medical Specialist Guidelines 2.0 of the Netherlands Association of Medical Specialists.¹⁰ This methodology is based on the international Appraisal of Guidelines for Research and Evaluation II criteria for assessing the quality of guidelines (<http://www.agreertrust.org>).¹¹ In short, the development of the guidelines began with the formulation of a number of starting questions (supplemental Data 4). Each question guided a systematic review of the literature in both MEDLINE and EMBASE up to December 2010, using Medical Subject Headings (MeSH), free text words related to the name of the predefined genes and disease of interest (see "Definitions"), and disease-specific symptoms. In addition, we retrieved more recent original and review articles by using the same key words for searching PubMed, and checked the references of those articles. Searches were limited to those written in English, German, French, and Dutch. Searches were not limited by date.

The majority of the articles retrieved were case reports or small case series. The searches also showed a number of reviews; however, none of them used a systematic approach. Therefore, we modified the usual therapeutic/intervention-based system for grading the evidence^{12,13} of the conclusions in supplemental Data 2 into the following levels: (1) proven or very likely, based on results by numerous investigators in various populations and settings; (2) probable, based on a moderate number of reports; (3) indicative, based on a small number of reports; and (4) expert opinion of members of the working group.

Working group

The working group consisted of the authors of this article.

Definitions

These guidelines cover microcytic anemias due to genetic defects in iron metabolism or heme synthesis (Table 2). To select these diseases, we used recent reviews^{1,4} and added disorders that were described in more recent years (eg, sideroblastic anemia due to defects in *STEAP3* and *XLDPP*). We excluded microcytic anemia caused by hemoglobinopathies and genetic diseases not predominantly characterized by a primary defect in iron metabolism or heme synthesis.

Introduction to iron metabolism and heme synthesis

Iron plays an essential role in many biochemical processes, particularly in the production of heme for incorporation into Hb and myoglobin, and Fe-S clusters, which serve as enzyme cofactors.¹⁴ In iron deficiency, cells lose their capacity for electron transport and energy metabolism. Clinically, iron deficiency causes anemia and may result in neurodevelopmental deficits.¹⁵ Conversely, iron excess leads to complications such as endocrine disorders, liver cirrhosis, and cardiac dysfunction.¹⁶

Therefore, tight regulation of body iron homeostasis on both systemic and cellular levels is paramount. These processes comprise several proteins, most of which have been discovered in the last 20 years. Defects in these proteins lead to disorders of iron metabolism and heme synthesis that are characterized by iron overload, iron deficiency, or iron maldistribution.

Cells involved in iron homeostasis are duodenal enterocytes, hepatocytes, macrophages, and erythroid precursors. To illustrate the description of pathophysiology for the different disorders, we schematically (Figure 1) present the function of the above-mentioned cells in iron homeostasis and the proteins involved.

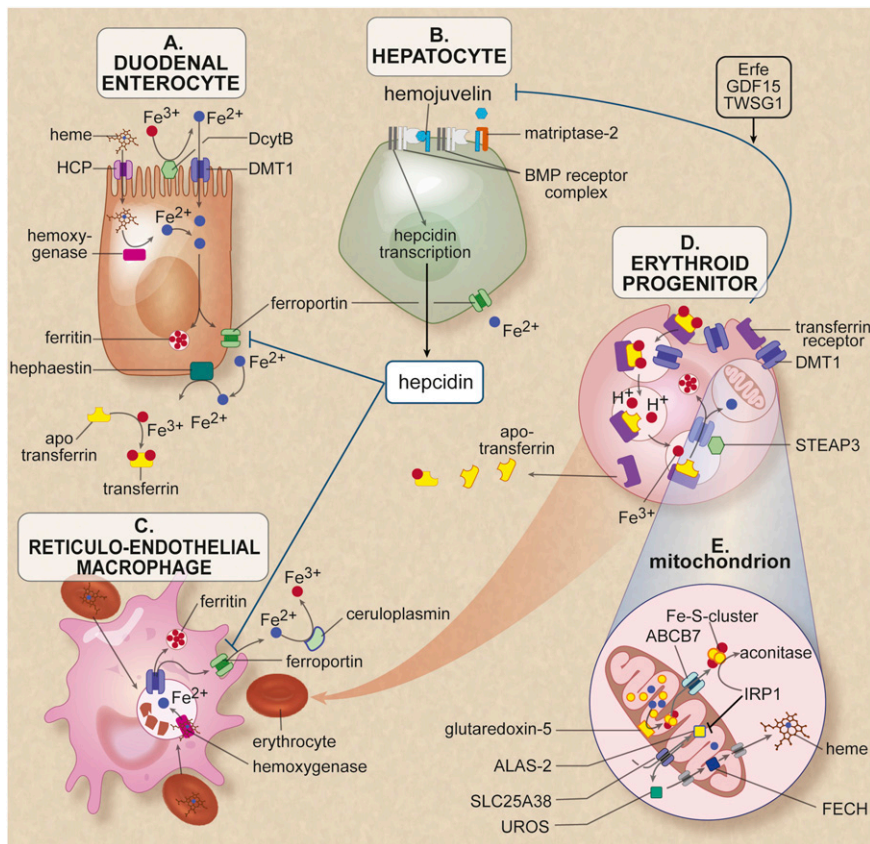


Figure 1. Cells and proteins involved in iron homeostasis and heme synthesis. (A) The enterocyte: iron enters the body through the diet. Most iron absorption takes place in the duodenum and proximal jejunum. The absorption of iron takes place in different phases. In the luminal phase, iron is solubilized and converted from trivalent iron into bivalent iron by duodenal cytochrome B (DcytB). Heme is released by enzymatic digestion of hemoglobin and myoglobin during the mucosal phase, iron is bound to the brush border and transported into the mucosal cell by the iron transporter divalent metal transporter 1 (DMT1). Heme enters the enterocyte presumably through the heme carrier protein (HCP). In the cellular phase, heme is degraded by heme oxygenase and iron is released. Iron is either stored in cellular ferritin or transported directly to a location opposite the mucosal side. In the last phase of iron absorption, Fe^{2+} is released into the portal circulation by the basolateral cellular exporter ferroportin. Enterocytic iron export requires hephaestin, a multicopper oxidase homologous to ceruloplasmin (CP), which oxidizes Fe^{2+} to Fe^{3+} for loading onto transferrin. This cellular efflux of iron is inhibited by the peptide hormone hepcidin binding to ferroportin and subsequent degradation of the ferroportin-hepcidin complex. (B) The hepatocyte serves as the main storage for the iron surplus (most body iron is present in erythrocytes and macrophages). Furthermore, this cell, as the main producer of hepcidin, largely controls systemic iron regulation. The signal transduction pathway runs from the membrane to the nucleus, where bone morphogenetic protein (BMP) receptor, the membrane protein hemojuvelin (HJV), the hemochromatosis (HFE) protein, transferrin receptors 1 and 2, and matriptase-2 play an essential role. Through intracellular pathways, a signal is given to hepcidin transcription. The membrane-associated protease matriptase-2 (encoded by *TMPRSS6*) detects iron deficiency and blocks hepcidin transcription by cleaving HJV. (C) The macrophage belongs to the group of reticuloendothelial cells and breaks down senescent red blood cells. During this process, iron is released from heme proteins. This iron can either be stored in the macrophage as hemosiderin or ferritin or it may be delivered to the erythroid progenitor as an ingredient for new erythrocytes. The iron exporter ferroportin is responsible for the efflux of Fe^{2+} into the circulation. In both hepatocytes and macrophages, this transport requires the multicopper oxidase CP, which oxidizes Fe^{2+} to Fe^{3+} for loading onto transferrin. (D) The erythroid progenitor: transferrin saturated with 2 iron molecules is endocytosed via the transferrin receptor 1. After endocytosis, the iron is released from transferrin, converted from Fe^{3+} to Fe^{2+} by the ferredoxin STEAP3, and transported to the cytosol by DMT1, where it is available mainly for the heme synthesis. Erythropoiesis has been reported to communicate with the hepatocyte by the proteins TWSG1, GDF15, and erythroferrone (Erf) that inhibit signaling to hepcidin.^{7,14,30} (E) The mitochondria of the erythroid progenitor: in the mitochondria the heme synthesis and Fe-S cluster synthesis takes place. In the first rate-limiting step of heme synthesis, 5-aminolevulinic acid (ALA) is synthesized from glycine and succinyl-coenzyme A by the enzyme δ -ALA synthase 2 (ALAS2) in the mitochondrial matrix. The protein SLC25A38 is located in the mitochondrial membrane and is probably responsible for the import of glycine into the mitochondria and might also export ALA to the cytosol. In the heme synthesis pathway, the uroporphyrinogen III synthase (UROS) in the cytosol is the fourth enzyme. It is responsible for the conversion of hydroxymethylbilane (HMB) to uroporphyrinogen III, a physiologic precursor of heme. In the last step, ferrochelatase (FECH), located in the mitochondrial intermembrane space, is responsible for the incorporation of Fe^{2+} into PPIX to form heme. GATA1 is critical for normal erythropoiesis, globin gene expression, and megakaryocyte development; it also regulates expression of UROS and ALAS2 in erythroblasts. The enzyme glutaredoxin-5 (GLRX5) plays a role in the synthesis of the Fe-S clusters, which are transported to the cytoplasm, probably via the transporter ABCB7. Figure adapted from van Rooijen et al.² Professional illustration created by Debra T. Dartez.

1. Disorders due to low iron availability for erythropoiesis

1A. Iron-refractory iron deficiency anemia (IRIDA) due to defects in *TMPRSS6*

Pathogenesis and epidemiology. *TMPRSS6* (OMIM 609862) encodes matriptase-2 (a type II plasma membrane serine protease) that senses iron deficiency and blocks hepcidin transcription by cleaving HJV. Consequently, pathogenic *TMPRSS6* defects result in uninhibited hepcidin production, causing IRIDA.¹⁷⁻¹⁹ At the population

level, genome-wide association studies show that *TMPRSS6* is polymorphic with a relatively large number of high-frequency polymorphisms, some of which (particularly p.Ala736Val) are associated with significant decrease in the concentrations of iron, Hb, and MCV of the red blood cell.^{20,21} The prevalence of pathogenic mutations leading to IRIDA is unknown, but underdiagnosis seems likely. Patients with IRIDA due to a suspected homozygous or compound heterozygous *TMPRSS6* defect are described in 61 patients in 39 families. Because functional studies are not always performed, it is unclear whether all these mutations are pathogenic. A few patients with microcytic anemia, low TSAT, and low-normal ferritin are reported to be heterozygous for *TMPRSS6* defects (supplemental Data 1).

Table 1. Recommendations**Part 1: Anemia due to low iron bioavailability for erythropoiesis****1A. Iron-refractory iron deficiency anemia (IRIDA) due to defects *TMPRSS6****Clinical presentation and diagnostics*

- In patients with unexplained microcytic anemia with low TSAT and normal or reduced serum ferritin concentration who do not respond to or partially respond to oral iron and (partially) respond to intravenous iron supplementation, IRIDA due to a *TMPRSS6* defect should be considered. Determination of serum hepcidin is recommended if the diagnosis of IRIDA is suspected.
- Increased serum hepcidin in relation to TSAT (hepcidin:TSAT ratio > local upper reference limit is suggestive of IRIDA. *TMPRSS6* mutation analysis is recommended.
- In case of a homozygous or compound heterozygous *TMPRSS6* defect, IRIDA due to a dysfunctional matriptase-2 protein should be diagnosed.
- No recommendation can be made on the clinical significance of heterozygous *TMPRSS6* defects with or without concomitant polymorphisms because of lack of evidence.

Treatment

- In a patient with iron deficiency anemia due to pathogenic *TMPRSS6* defects, initial treatment with oral iron or oral iron combined with ascorbic acid should be considered.
- If this initial treatment does not result in acceptable hemoglobin (Hb) levels, the patient should be treated with intravenous iron supplementation.
- In IRIDA patients, the choice of the chemical form of intravenous iron should be based on its registration for the specific age group OR a proven good safety profile in adults during several years of postmarketing surveillance.
- The total intravenous iron cumulative doses should be calculated on the basis of formulas of the deficit of body iron, allowing for the correction of the Hb deficit and rebuilding the iron stores. Doses should be repeated every 3 to 7 days until the total dose is administered. Single doses should not exceed the maximum single dose.
- Serum ferritin levels should be monitored and preferably should not exceed 500 µg/L to avoid toxicity of iron overload, especially in children and adolescents.
- No recommendation can be made on the efficacy of the combination of intravenous supplementation and erythropoietin (EPO) treatment in IRIDA patients because of lack of evidence. This combination therapy might prevent toxic iron loading in some patients.

*Family screening**

- The proband should be informed about the mostly autosomal recessive inheritance pattern of IRIDA. We recommend screening relatives of the proband for the IRIDA phenotype (siblings and spouse in case of consanguinity and reproductive age). If the proband is diagnosed at a young age, and his/her parents are of reproductive age, phenotyping of the parents is recommended. In case of a clinical IRIDA phenotype in the above-mentioned relatives, mutation analysis is recommended.
- Children of the proband should only be phenotyped and, in case of an IRIDA phenotype, genotyped in case of consanguinity of the proband and his/her spouse or in case of proven carriership of both proband and his/her spouse.
- Because of the complex genotype-phenotype correlation in IRIDA, we recommend referral to a clinical geneticist in case of an IRIDA phenotype and a pathogenic heterozygous *TMPRSS6* defect.

1B. Ferroportin disease due to defects in *SLC40A1**Clinical presentation and diagnostics*

- Ferroportin disease due to LOF mutations should NOT be considered as a cause of microcytic anemia.
- When anemia occurs in a patient with primary iron overload during treatment with repeated phlebotomies, the presence of LOF ferroportin disease may be considered.

Treatment

- Patients with iron overload due to LOF and gain-of-function (GOF) ferroportin disease should be treated with repeated phlebotomies.
- For patients who develop anemia during phlebotomies despite elevated ferritin levels, extension of the phlebotomy interval is recommended
- In patients who develop anemia during phlebotomies, additional treatment with EPO may be considered.

*Family screening**

- The proband should be informed about the autosomal dominant inheritance pattern of ferroportin disease.
- We recommend screening the first-degree relatives (parents, siblings, and children) and additional family members (via cascade screening) for the *SLC40A1* mutation identified in the proband. Mutation carriers should be screened for the ferroportin disease phenotype.

1C. Aceruloplasminemia (ACP) due to defects in *CP**Clinical presentation and diagnostics*

- In patients with the combination of insulin-dependent diabetes, neurodegenerative disease, retinal degeneration, and mild anemia with systemic iron loading, *CP* defects should be considered.
- In patients with absent or very low CP in combination with low serum copper and iron, high serum ferritin, and characteristic findings on magnetic resonance imaging (MRI) that are compatible with iron accumulation in liver, pancreas, and brain, ACP should be considered.
- In case of homozygous or compound heterozygous *CP* defects, ACP should be diagnosed.

Treatment

- In patients with ACP, anemia is mild and therefore treatment is not recommended.
- Iron chelation therapy should be considered for the treatment of ACP.

*Family screening**

- The proband should be informed about the autosomal recessive inheritance pattern of ACP. Siblings of the proband may be also affected. Since *CP* defects are very rare, the chance that children of the proband are affected is negligible.
- We recommend screening for pathogenic *CP* mutations (siblings and spouse in case of consanguinity and reproductive age). In case a proband is diagnosed with ACP after the fourth decade, his or her parents are not likely to be of reproductive age, and genotyping is not recommended.
- Children of the proband should only be checked for *CP* mutations in case of consanguinity of the proband and his/her spouse or in case of proven carriership of both proband and his/her spouse.
- Individuals heterozygous or compound heterozygous for *CP* mutation should be screened for the ACP disease phenotype.

*Recommendations on family screening are based on Borry et al⁸ and Godard et al.⁹

Table 1. (continued)

Part 2: Defects in iron acquisition by the erythroid precursors2A. Hypotransferrinemia due to defects in *TF**Clinical presentation and diagnostics*

- In patients with unexplained hypochromic microcytic anemia, low iron binding capacity (low serum transferrin concentrations) and increased ferritin concentrations, hypotransferrinemia should be considered. Mutation analysis of the *TF* gene is recommended.
- In case of a homozygous or compound heterozygous *TF* defect, hypotransferrinemia due to a *TF* defect should be diagnosed.

Treatment

- Transferrin supplementation by either plasma transfusion or apotransferrin infusion is recommended in patients with hypotransferrinemia due to a *TF* defect.
- Iron status should be monitored in patients with hypotransferrinemia due to a *TF* defect in order to detect toxic iron loading early.
- In case of systemic iron loading, phlebotomies are recommended. If phlebotomies are not tolerated because of decreasing Hb, chelation therapy is recommended.

*Family screening**

- Recommendations are the same as those described in 1C.

2B. Anemia with systemic iron loading due to defects in *SLC11A2* (DMT1)*Clinical presentation and diagnosis*

- In patients presenting in childhood with unexplained microcytic anemia with increased TSAT, *SLC11A2* defects (among others) should be considered. Genotyping of *SLC11A2* is recommended.
- In case of a homozygous or compound heterozygous *SLC11A2* defect, diagnosis of microcytic anemia due to an *SLC11A2* defect is confirmed.

Treatment

- Patients with microcytic anemia due to pathogenic *SLC11A2* defects should be treated with oral iron supplementation and/or EPO and/or erythrocyte transfusions, according to the needs of the individual patient.
- In case of treatment with oral iron supplementation and/or erythrocyte transfusions, iron status should be monitored to detect toxic iron loading at an early stage.
- Since a normal serum ferritin concentration does not exclude liver iron loading in patients with *SLC11A2* defects, MRI of the liver should be considered.

*Family screening**

- Recommendations are the same as those described in 1C.

2C. Sideroblastic anemia due to defects in *STEAP3**Clinical presentation and diagnosis*

- In patients with unexplained hypochromic sideroblastic anemia with low or normal MCV, defects in the *STEAP3* gene should be considered.
- In case of the combination of hypochromic anemia and gonadal dysfunction, *STEAP3* defects should be considered.

Treatment

- Patients with hypochromic anemia due to *STEAP3* defects can be treated with erythrocyte transfusions in combination with EPO. Systemic iron loading should be treated with iron chelation.

*Family screening**

- Because sideroblastic anemia due to a *STEAP3* defect has been described in only 1 family, the inheritance pattern is uncertain and the proband should be referred to a clinical geneticist.

Part 3: Defects in the heme and/or iron-sulfur (Fe-S) cluster synthesis3A. Sideroblastic anemia due to defects in *SLC25A38**Clinical presentation and diagnosis*

- In children with severe unexplained microcytic sideroblastic anemia, defects in *SLC25A38* should be considered.

Treatment

- Hematopoietic stem cell transplantation (HSCT) is recommended because it is the only curative option.
- Symptomatic treatment consists of erythrocyte transfusions and chelation therapy.

*Family screening**

- Recommendations are the same as those described in 1C.

3B. X-linked sideroblastic anemia (XLSA) with ataxia due to defects in *ABCB7**Clinical presentation and diagnosis*

- In male patients presenting with the combination of a mild microcytic anemia and ataxia, a defect in *ABCB7* should be considered.
- Increased protoporphyrin IX concentrations in red blood cells are suggestive of this disorder.

Treatment

- Treatment of (mild) anemia is not indicated.

*Family screening**

- The proband should be informed about the X-linked inheritance pattern of anemia and ataxia due to *ABCB7* defects. Brothers of the proband may be also affected. Sons of the proband are not affected. Daughters of the proband are obligate carriers of the relevant *ABCB7* defect and have no or a mildly anemic clinical phenotype.
- We recommend offering screening for the *ABCB7* mutation (the mother and sisters for carriership and the brothers). The spouse should be checked only in case of consanguinity and reproductive age. Daughters of the proband should be offered checking for carriership.

3C. XLSA due to defects in *ALAS2**Clinical presentation and diagnosis*

- XLSA due to an *ALAS2* defect should be considered in patients of both gender and of all ages with pyridoxine responsive or unresponsive (mild) microcytic sideroblastic anemia with or without iron loading and in patients with unexplained iron loading.
- In patients suspected for XLSA, iron parameters (ferritin, TSAT) should be checked to detect iron loading, as well as liver enzymes, and signs of liver fibrosis or hepatocellular carcinoma.
- In case of elderly patients presenting with myelodysplastic syndrome (MDS) refractory anemia with ring sideroblasts or MDS-refractory cytopenia with multilineage dysplasia without specific cytogenetic abnormalities, the presence of *ALAS2* defects should be considered, especially if the anemia is microcytic.

*Recommendations on family screening are based on Borry et al.⁸ and Godard et al.⁹

Table 1. (continued)

<i>Treatment</i>
<ul style="list-style-type: none"> • Management of patients with XLSA should involve treatment of anemia and prevention and treatment of iron overload. • Initial treatment with pharmacologic doses of pyridoxine (50 to 200 mg per day) is recommended. Occasionally high doses (up to 300 mg per day) in overweight, active, or elderly patients may be considered. • In case of pyridoxine responsiveness, lifelong supplementation with pyridoxine 10 to 100 mg daily is recommended. • Once a response is obtained, evidence suggests the lifelong maintenance dose may be lowered to 10 to 100 mg per day, because doses that are too high may result in neurotoxicity. • Iron loading should be treated, preferably by phlebotomies.
<i>Family screening*</i>
<ul style="list-style-type: none"> • The proband should be informed about the X-linked inheritance pattern of anemia and/or iron overload due to <i>ALAS2</i> defects. Brothers of the proband may be also affected. Sons of the proband are not affected. Daughters of the proband are obligate carriers of the relevant <i>ALAS2</i> defect. • We recommend screening for the <i>ALAS2</i> mutation (the brothers and also the mother, sisters, and daughters for carriership and because women may develop an XLSA phenotype later in life). The spouse should be checked only in case of consanguinity and reproductive age. • Female carriers and male hemizygous individuals should be screened for the XLSA phenotype.
3D. Sideroblastic anemia due to defects in <i>GLRX5</i>
<i>Clinical presentation and diagnosis</i>
<ul style="list-style-type: none"> • In patients presenting with microcytic sideroblastic anemia and iron loading (among other symptoms), defects in <i>GLRX5</i> should be considered. • In case of microcytic sideroblastic anemia without <i>ALAS2</i> or <i>SLC25A38</i> defects, a lymphoblastic culture may be considered. Decreased activity of mitochondrial acetonase and succinate dehydrogenase (complex I-IV) as a manifestation of a defective Fe-S cluster synthesis is suggestive of a <i>GLRX5</i> defect.
<i>Treatment</i>
<ul style="list-style-type: none"> • In patients with sideroblastic anemia and iron loading due to <i>GLRX5</i> defects, monitoring of the iron status and possible complications of iron overload is recommended. Iron loading should be treated with chelation therapy. Severe anemia should be treated with blood transfusions.
<i>Family screening*</i>
<ul style="list-style-type: none"> • Recommendations are the same as those described in 1C.
3E. EPP due to defects in <i>FECH</i> and GOF mutations in <i>ALAS2</i> (XLDPP)
<i>Clinical presentation and diagnosis</i>
<ul style="list-style-type: none"> • In patients with an unexplained mild normocytic to microcytic anemia, low to normal serum ferritin, and cutaneous protoporphyria (a painful photosensitivity in childhood), EPP should be considered in both men and women. • The diagnosis of EPP should be confirmed by fluorescent erythrocytes in an unstained smear and/or enhanced protoporphyrin in plasma and/or erythrocytes. • To prove autosomal recessive EPP, <i>FECH</i> activity should be measured or <i>FECH</i> mutations should be determined. • In case EPP is not explained by the <i>FECH</i> genotype, the <i>ALAS2</i> gene should be investigated for the presence of GOF mutations.
<i>Treatment</i>
<ul style="list-style-type: none"> • If anemia is present in EPP, it is mild and treatment is not recommended.
<i>Family screening*</i>
<ul style="list-style-type: none"> • Because of complex genetics influenced by genetic background, we recommend referral to a clinical geneticist in case of EPP. Family screening for a proband with XLDPP due to an <i>ALAS2</i> GOF mutation should initially include phenotyping and genotyping of all first-degree family members including women (mother in case of a male proband, both parents in case of a female proband, siblings, and children).
3F. Congenital erythropoietic porphyria (CEP) due to defects in <i>UROS</i> or <i>GATA1</i>
<i>Clinical presentation and diagnosis</i>
<ul style="list-style-type: none"> • In patients with an unexplained hemolytic anemia in combination with a painful cutaneous photosensitivity, autosomal recessive CEP has to be considered in both men and women. • In patients with combined cutaneous photosensitivity and severe microcytic hypochromic hemolytic anemia, X-linked CEP should be considered. • Since disease severity and onset of first symptoms is highly variable, CEP should be considered in both children and adults in case of the above-mentioned phenotype. • Diagnosis should be based on increased urinary levels of uroporphyrin I and coproporphyrin I and confirmed by decreased <i>UROS</i> activity in the erythrocytes or the presence of pathogenetic homozygous or compound heterozygous mutations in <i>UROS</i> or in <i>GATA1</i>.
<i>Treatment</i>
<ul style="list-style-type: none"> • In patients with CEP, allogeneic HSCT should be considered as the only curative treatment. • Chronic erythrocyte transfusion is recommended as a symptomatic treatment, and iron chelation is recommended according to guidelines for chronic transfusions.
<i>Family screening*</i>
<ul style="list-style-type: none"> • Recommendations for CEP due to <i>UROS</i> defects are the same as those described in 1C. • Recommendations for CEP due to <i>GATA1</i> are the same as those for XLDPP due to GOF <i>ALAS2</i> mutations (see 3E).

*Recommendations on family screening are based on Borry et al⁸ and Godard et al.⁹

Clinical presentation and diagnosis. Most patients with IRIDA present in childhood with a microcytic anemia (which tends to become less severe with increasing age²²) in combination with a remarkably low TSAT and, if untreated, a low-to-normal ferritin. Most patients fail to respond to oral iron, but because this feature is also observed in iron-deficient anemic patients with autoimmune atrophic gastritis, *Helicobacter pylori* infection, or celiac disease, these (nongenetic) disorders should be considered in the diagnostic workup.²³

In IRIDA, serum hepcidin is inappropriately high, given the low body iron status. Consequently, the hepcidin:TSAT ratio is high.²⁴ In the absence of inflammation, an increased hepcidin:TSAT ratio is specific for IRIDA, whereas a low hepcidin:ferritin ratio is characteristic for many genetic iron loading disorders.

In affected children, growth, development, and intellectual performances are normal.²⁵ Although the pedigree structure of most patients with IRIDA shows an autosomal recessive inheritance, anecdotal reports suggest that heterozygous pathogenic

Table 2. Overview of characteristics of rare microcytic anemias due to genetic disorders of iron metabolism or heme synthesis

Pathophysiology	Low iron availability for erythropoiesis			Defect in iron acquisition of erythroid progenitor cells			Defect in heme synthesis or Fe-S cluster biogenesis							
	IRIDA	Ferroportin disease*	ACP	Hypotransferrinemia	Sideroblastic anemia with iron loading	Sideroblastic anemia	Sideroblastic anemia	XLSA with ataxia	XLSA	Sideroblastic anemia	EPP	XLDPP	CEP	XLCEP
Gene	TMPRSS6	SLC40A1	CP	TF	DMT1	STEAP3	SLC25A38	ABCB7	ALAS2†	GLRX5	FECH	ALAS2‡	UROS	GATA1
Protein	Matriptase-2	Ferroportin-1	CP	Transferrin	DMT1	STEAP3	SLC25A38	ABCB7	ALAS2	GLRX5	FECH	ALAS2	UROS	GATA1
Patients described (n)	20-100	>200	20-100	5-20	5-20	<5 (n = 3)	20-100	5-20	>100	<5 (n = 1)	>100	20-100	>200	1
Inheritance	AR§	AD	AR/AD	AR	AR	AR/AD	AR	XL¶	XL	AR	Mostly AD	XL	AR	XL
Age at presentation	Child	Adult	40-50 y	Variable	Child	Child	Child	Child	Variable	Adult	Neonate/child	Neonate/child	Variable, fetus-adult	Neonate
Neurologic symptoms	No	No	Yes	No	No	No#	No	Yes**	No	No	No	No	No	No
Skin symptoms	No	No	No	No	No	No	No	No	No	No	Yes	Yes	Yes	Yes
Anemia	Variable	Mild in 10%††	Mild	Variable	Variable	Variable	Severe	Mild	Mild, no anemia‡‡	Mild	Mild, no anemia	Mild, no anemia	Hemolytic, variable severity	Severe, hemolytic
MCV	Microcytic	Normocytic	Microcytic/normocytic	Microcytic	Microcytic	Microcytic/normocytic ^a	Microcytic	Microcytic	Microcytic	Microcytic	Microcytic/normocytic	Normocytic	No data	Microcytic
Ring sideroblasts	No	No	No	No	No	Yes	Yes	Yes	Yes	Yes	Yes	No data	No	No
Iron loading	No	Yes	Yes	Variable ^b	Variable ^b	Possible ^c	Yes	No	Variable	Yes	No	No data	No data	No
Ferritin	Normal-low	High	High	Variable ^b	Variable ^b	High ^c	High	Normal	Variable	High	Low/normal	Low/normal	No data	Normal
TSAT	<10%	Normal/high†††	Normal/low	100%	High	High	High	Normal	Normal/high	High	Normal/low	Normal/low	No data	Normal
Hepcidin	High ^d	Variable	No data	Low	Normal/low	Normal/increased ^e	No data	No data	No data	No data	No data	No data	No data	No data
Treatment	Oral iron, intravenous iron, EPO ^f	Phlebotomy††	Chelation	Erythrocyte transfusion, apotransferrin, plasma, chelation, phlebotomy	Oral iron, erythrocyte transfusion, EPO, chelation	Erythrocyte transfusion, EPO chelation	HSCT, transfusion, chelation	Not indicated	Pyridoxine, folate, phlebotomy, chelation	Erythrocyte transfusion, chelation	No treatment of anemia, avoid light on skin	No treatment of anemia, avoid light on skin	HSCT, erythrocyte transfusion, chelation, avoid light on skin	No data

AD, autosomal dominant; AR, autosomal recessive; HSCT, hematopoietic stem cell transplantation; XL, X-linked.

*Both LOF and GOF have been described; data in column reflect those of the combined group unless stated otherwise.

†LOF.

‡GOF.

§Autosomal dominant inheritance pattern also described.

||Heterozygous pathogenic mutation in combination with decreased expression of normal allele.

#In some families, only women are affected because the defect is lethal in men.

**Gonadal dysfunction.

††Neurologic symptoms manifest in childhood; anemia may develop later in life (young adolescent).

†††In case of LOF mutations, anemia is more likely to occur and TSAT is lower.

‡‡Anemia resolves by pyridoxine treatment in most XLSA patients.

^aMean corpuscular Hb decreased.

^bLiver iron loading has been described and demonstrated by MRI and liver biopsy, even if serum ferritin is normal.

^cIron loading may be secondary to erythrocyte transfusion.

^dHepcidin:TSAT ratio is greater than the upper limit of the reference range in the absence of inflammation.

^eMeasured after treatment with transfusions.

^fOnly 1 human study available on EPO.

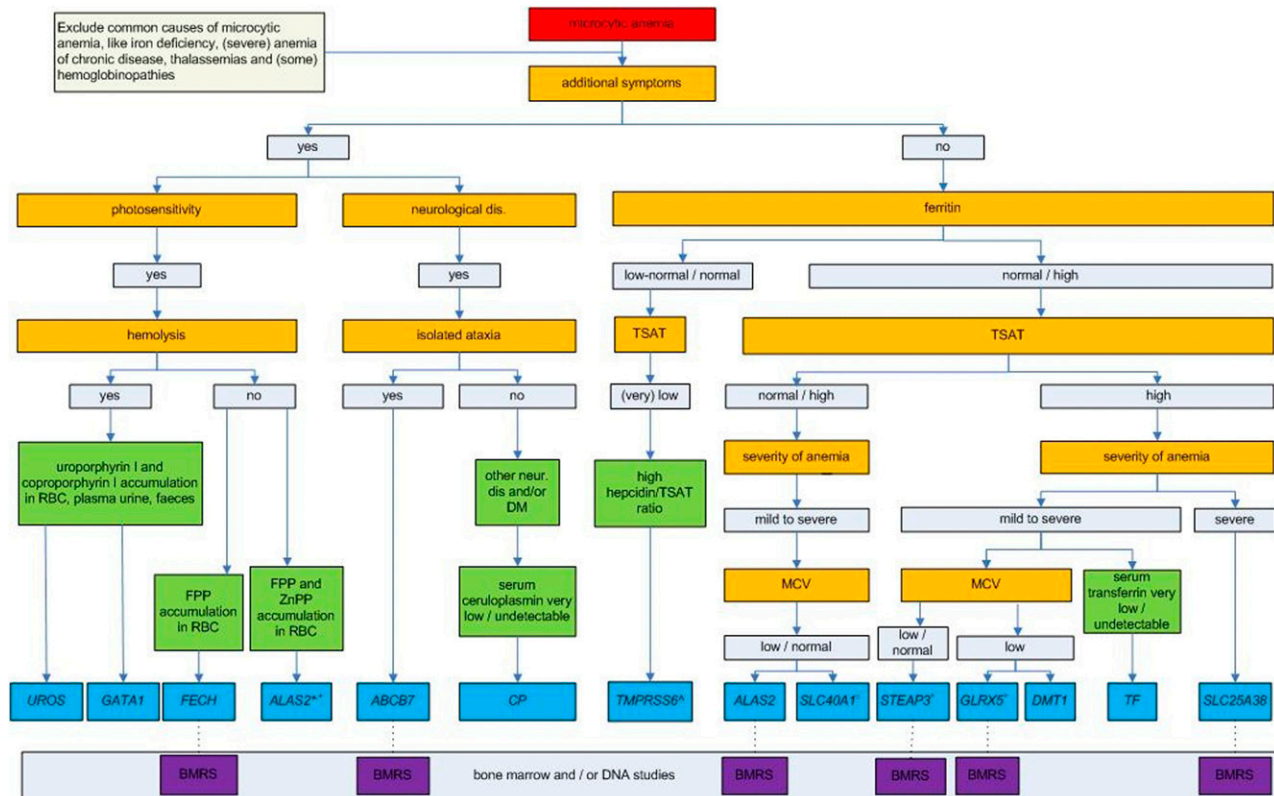


Figure 2. Diagnostic flowchart for microcytic anemias caused by inherited defects in iron metabolism or heme synthesis. Genes are given in italics and refer to the disorders of this review (Table 2). After clinical and laboratory assessment, clinicians may proceed to perform a diagnostic workup with either bone marrow smears or gene analysis. Iron parameters should be interpreted in the context of the age of the patient and the given treatment: older patients are more likely to have developed iron overload (increased TSAT and ferritin) due to increased and ineffective erythropoiesis and iron supplementation and transfusions. Note that for some diseases, the decision tree is based on only few patients (Table 2). BMRS, bone marrow ring sideroblasts; DM, diabetes mellitus; FPP, free protoporphyrin; neur. dis, neurologic disease; ZnPP, zinc protoporphyrin. *Patients have normocytic anemia and GOF mutation; †only 1 family described; ‡patients have normocytic anemia and the majority have LOF mutations; §in rare cases, these patients present with elevated ferritin levels.

TMRSS6 mutations might cause a mild IRIDA phenotype (supplemental Data 1). It is still unclear whether this can be explained by environmental factors, a combination with modulating polymorphisms, or a low-expressing allele, or whether the current Sanger sequencing strategy misses certain defects in the exons or introns of the gene or its regulatory regions or whether defects in other genes are involved. Therefore, we conclude that IRIDA due to a *TMRSS6* defect can be diagnosed with certainty only when the patient is homozygous or compound heterozygous for a pathogenic mutation.

Treatment. Case reports indicate that the pathogenicity of the *TMRSS6* defect determines the response to oral iron. Severe *TMRSS6* defects usually lead to oral iron resistance. Only a few patients (partially) respond to oral iron (supplemental Data 1). Ascorbic acid (3 mg per day) supplementation along with oral ferrous sulfate has been reported to improve Hb and iron status in an infant resistant to oral iron supplementation only.²⁶ Case series show that repeated administration of intravenous iron (iron sucrose or iron gluconate) increase Hb and ferritin and, to a lesser extent, MCV and TSAT, although complete normalization of Hb is seldom achieved. Attempting to correct the Hb level to the reference range may place the patient at risk for iron overload. We found no evidence for a threshold of circulating ferritin levels above which the iron in the reticuloendothelial macrophages becomes toxic in the long term. However, following guidelines for iron treatment in patients with chronic kidney disease,²⁷ we recommend monitoring serum ferritin levels and not exceeding a concentration of 500 $\mu\text{g/L}$

to avoid this risk, especially in children and adolescents. The role of EPO treatment in IRIDA is controversial.^{28,29} Trials with novel hepcidin-lowering compounds in these patients have not been performed.³⁰

1B. Ferroportin disease due defects in *SLC40A1*

Pathogenesis and epidemiology. *SLC40A1* (ferroportin-1, *IREG1*, *MTP1*, *SLC11A3*) (OMIM 606069) encodes the protein ferroportin,³¹ the only known human cellular iron exporter (Figure 1).^{14,32}

In 2000, ferroportin was identified in the zebrafish mutant *weissherbst* as the defective gene responsible for the hypochromic anemia in these animals that was ascribed to inadequate circulatory iron levels.⁶ In humans, only heterozygous mutations in *SLC40A1* are reported, and microcytosis is not observed. The resulting hereditary hemochromatosis (HH) type 4, or ferroportin disease, is an autosomal dominant condition with a heterogeneous phenotype and is primarily characterized by iron overload.^{33,34} In almost all case series and the available narrative reviews, mutations causing ferroportin disease are classified into two groups: LOF (HH type 4A or classical HH) and GOF (HH type 4B or atypical HH) mutations.^{35,36} Functional studies and clinical data show that an LOF mutation typically leads to iron retention in the duodenal cells and macrophages due to reduced ferroportin activity and preserved inhibitory capacity of hepcidin. The phenotype is characterized by an elevated serum ferritin level in association with a low-to-normal TSAT and predominant iron deposition in macrophages; some

patients have a low tolerance to phlebotomy.³⁵ GOF mutations lead to increased iron absorption due to increased ferroportin activity, which is resistant to the inhibitory effect of hepcidin. As a consequence, the iron overload phenotype of these patients is indistinguishable from other forms of hereditary HH^{33,34}; therefore, this subtype of ferroportin disease does not fit into the category of “disorders due to low iron available for erythropoiesis.”

For certain genotypes, however, the functional studies and the biochemical and histologic phenotypes vary among studies and patients.³⁷ Thus, the distinction between LOF and GOF mutations is not always straightforward. To define the type of mutation for the purposes of these guidelines, we developed a classification system based on both phenotypic and functional characteristics (supplemental Data 3). On the basis of this classification, we identified 36 different LOF mutations and 15 GOF mutations. A total of 207 patients with an LOF mutation and 73 patients with a GOF mutation were found worldwide.

Clinical presentation and diagnosis. Symptoms are related to iron overload and are nonspecific. Because these guidelines cover anemias, in our evaluation of the literature on ferroportin disease, we investigated the occurrence of anemia (defined by the World Health Organization)³⁸ as the presenting symptom.

In 76 (27.7%) and 24 (8.5%) of 280 patients, both Hb and MCV were numerically noted. Eight of the patients (10%) fulfilled the WHO criteria of anemia without additional causes of microcytic anemia (Table 1 in supplemental Data 3). Five males had Hb between 12.0 and 12.9 g/dL, and three females had Hb between 11.1 and 11.5 g/dL without microcytosis. Seven of the 8 anemic patients were annotated with an LOF mutation.

We conclude that of all 76 patients diagnosed with iron overload due to both LOF and GOF mutations in *SLC40A1* and with documented Hb levels, only ~10% were anemic. This anemia is described as mild and normocytic.

Treatment. Iron overload in patients with both LOF and GOF ferroportin disease is treated with phlebotomy. Both the application of phlebotomy and its effects were described for 94 patients. In 14 (14.8%) of the 94 patients, a transient mild or profound anemia during phlebotomy treatment was reported. Our literature evaluation showed that the risk for the development of anemia during phlebotomy was associated with older age and an LOF mutation phenotype (eg, a relatively low TSAT) (Table 2 in supplemental Data 3). Data from case reports suggest that patients who develop anemia upon phlebotomy benefit from extension of the phlebotomy interval.

1C. Aceruloplasminemia (ACP) due to defects in CP

Pathogenesis and epidemiology. CP (OMIM 604290) encodes CP, which is secreted into plasma and carries 95% of circulating plasma copper. CP catalyzes cellular efflux of iron by oxidizing Fe²⁺ to Fe³⁺ for binding to circulating transferrin (Figure 1).³⁹ In vitro studies and studies with mice show that CP is also required for the stability of the iron exporter ferroportin, especially in glial cells.⁴⁰ Mouse studies demonstrate that the absence of CP leads to widespread iron overload in parenchymal and reticuloendothelial organs, including the nervous system.³⁹

The incidence of ACP in Japan is estimated to be approximately 1 per 2 000 000 in nonconsanguineous marriages. There are no reliable data on the incidence and prevalence in Western European countries.⁴¹ In total, 35 pathogenic CP mutations have been described in 50 families. ACP is a rare autosomal recessive disease. However, 7 patients with a clinical phenotype of ACP were heterozygous for a CP defect (supplemental Data 1).

Clinical presentation and diagnosis. Iron accumulation in ACP affects the liver, pancreas, and central nervous system.⁴² Patients with ACP develop the classical triad of DM, retinal degeneration, and neurodegenerative disease with extrapyramidal and cerebellar symptoms in combination with mental dysfunction. A mild normocytic to microcytic anemia with low serum iron and elevated serum ferritin is a constant feature in ACP.⁴³ However, anemia was not the presenting symptom in any of the described patients. Disease onset typically occurs in the fourth to fifth decade of life with neurodegenerative symptoms. Most patients die in the sixth decade of life as a result of neurologic complications.⁴² Despite the hepatic iron overload, ACP has not been described to be associated with liver disease.

Absent or very low serum CP in combination with low serum copper and iron, high serum ferritin, and increased hepatic iron concentration is indicative of ACP. The diagnosis is supported by characteristic findings on MRI that are compatible with iron accumulation in liver, pancreas, and brain. Homozygous or compound heterozygous CP defects confirm the diagnosis of ACP.

Treatment. Case series describe normalization of serum ferritin and decrease of hepatic iron overload after treatment with iron chelation.⁴² In 6 patients, neurologic improvement,⁴²⁻⁴⁵ and in 2 other patients, reduction of insulin demand were described on treatment with iron chelators.⁴⁶

Oral administration of zinc sulfate in a symptomatic heterozygous patient with ACP has been reported, but the effect on neurologic symptoms remains unclear.^{44,47} Three homozygous patients with ACP were treated with fresh frozen plasma; their outcome was not reported.⁴⁸⁻⁵⁰

The anemia in ACP is mild and does not need any intervention.

2. Disorders due to defects in iron acquisition by the erythroid precursors

2A. Hypotransferrinemia due to defects in TF

Pathogenesis and epidemiology. Genetic hypotransferrinemia is a rare autosomal recessive disease due to a defect in TF (OMIM 19000).⁵¹ Transferrin deficiency leads to low concentrations of transferrin-bound iron with iron-deficient erythropoiesis and high concentrations of non-transferrin-bound iron with subsequent iron overload in nonhematopoietic tissues. Functional studies in a limited number of patients indicate that intestinal iron absorption is increased with augmented plasma iron clearance and reduced red cell iron utilization.^{52,53} The increased intestinal iron absorption results from the strongly reduced hepatic hepcidin production ascribed to iron-deficient erythropoiesis and low transferrin concentration.^{54,55}

Since 1961, at least 13 patients in 11 families with hypotransferrinemia were reported worldwide,^{52,53,56-59} Underlying molecular defects in TF have been recognized in 6 patients (supplemental Data 1).

Clinical presentation and diagnosis. Patients present in early life with microcytic and hypochromic anemia. The anemia is characterized by low serum iron and high ferritin levels. The transferrin level varies from being below limits of detection to being 20% of normal and is fully saturated. Serum hepcidin levels are low. The iron content in the bone marrow is reduced with a decreased myeloid:erythroid ratio in most patients.^{52,53,56-59}

Affected children may show a failure to thrive with occasional retardation in mental development. There are signs of widespread

iron overload with hepatomegaly and strikingly early endocrinopathy, skin iron deposition, and sometimes fatal cardiomyopathy. Some patients have osteoporosis.^{58,59}

The diagnosis is confirmed by molecular analysis of *TF*. Heterozygous relatives have decreased transferrin concentrations without anemia or systemic iron loading.

Treatment. Treatment consists of infusions of apotransferrin either directly or as plasma. Data on the dosage and frequency of these infusions are limited. Monthly infusions of plasma have been reported to be sufficient to normalize Hb and serum ferritin levels. To date, only 3 patients have been treated with apotransferrin on a compassionate use basis.^{53,58} The calculated elimination half-life varied between 4.8 and 10 days. Apotransferrin is not on the market for clinical purposes, but it has an orphan drug status (orphan designation EU/3/12/1027 on 17 July 2012 by the European Medicines Agency). A clinical trial in patients with hypotransferrinemia is ongoing (NCT01797055). Reluctance with repeated erythrocyte transfusion or iron substitution is advocated to avoid further iron overload.

2B. Anemia with systemic iron loading due to defects in *SLC11A2* (DMT1)

Pathogenesis and epidemiology. *SLC11A2* (OMIM 600523) encodes DMT1, a cellular membrane-bound iron transporter (Figure 1).^{1,60,61}

Molecular studies indicate that defects in *SLC11A2* cause defective enterocyte and erythroid iron uptake.⁶² Systemic iron loading suggests the presence of an additional pathway for intestinal iron absorption (eg, as heme).⁶³ Another explanation might be the low hepcidin levels, resulting in increased dietary iron absorption in case *SLC11A2* is not completely eliminated.⁶⁴ Anemia with systemic iron loading due to defects in *SLC11A2* is a rare autosomal recessive disorder: 7 patients from 6 families have been described as having homozygous (n = 2) or compound heterozygous (n = 5) defects.

Clinical presentation and diagnosis. Four of 7 described patients presented at birth with microcytic anemia and increased TSAT. Serum ferritin levels varied from low to moderately increased, with some association with erythrocyte transfusions or intravenous iron supplementation. Liver iron loading was demonstrated by MRI or biopsy in 5 of 7 patients at ages between 5 and 27 years, despite normal or only mildly increased ferritin concentrations in 3 of them.

Treatment. The 7 described patients with severe anemia were treated with erythrocyte transfusions. Three patients received oral iron, which increased Hb and led to transfusion independency in one patient.

Three patients received EPO, resulting in an increase of Hb but, based on the clinical course of 1 patient, not in prevention of liver iron loading.⁶⁵ Erythrocyte transfusions and probably also oral or intravenous iron cause additional liver iron loading. Chelation was not effective in reducing liver iron and resulted in a decrease of Hb (unpublished data, Tchernia and Beaumont).^{1,65}

2C. Sideroblastic anemia due to defects in *STEAP3*

Pathogenesis and epidemiology. *STEAP3* (OMIM 609671) encodes a ferredoxin, which is responsible for the reduction of Fe³⁺ to Fe²⁺ in the endosomes of erythroblasts (Figure 1).⁶⁶ Mouse studies show that absence of or reduced activity of ferredoxin results in severe microcytic anemia, which can be corrected by introduction of a functional *STEAP3*.⁶⁷ The first and so far only

human *STEAP3* mutation was recently described in 3 siblings born to healthy, nonconsanguineous parents.⁶⁸

Clinical presentation and diagnosis. The 3 siblings displayed a transfusion-dependent severe hypochromic anemia with a normal to slightly decreased MCV. Serum iron and ferritin were normal to increased, whereas TSAT was markedly increased. A bone marrow smear in the index patient showed ring sideroblasts. Liver biopsy after multiple erythrocyte transfusions showed iron loading. All patients suffered from gonadal dysfunction, as described for *STEAP3*-deficient mice.^{67,68} A heterozygous nonsense *STEAP3* mutation was inherited from the father, but no defect was found in the mother. The authors explained the normal phenotype of the father by the *STEAP3* expression of the “healthy” allele in lymphocytes, which was significantly higher than in his affected children.

Treatment. Treatment consisted of a combination of erythrocyte transfusions and chelation, and EPO increased the transfusion interval.

3. Disorders due to defects in the heme and/or Fe-S cluster synthesis

3A. Sideroblastic anemia due to defects in *SLC25A38*

Pathogenesis and epidemiology. *SLC25A38* (OMIM 610819) encodes a protein on the inner membrane of the mitochondria of hematopoietic cells, especially erythroblasts, and is essential for heme synthesis (Figure 1).⁶⁹ Its specific function is not known, but it has been hypothesized that *SLC25A38* facilitates 5-ALA production by importing glycine into mitochondria or by exchanging glycine for ALA across the mitochondrial inner membrane.

Defects in *SLC25A38* result in severe congenital sideroblastic anemia with microcytic hypochromic erythrocytes.⁶⁹ To date, 26 patients have been reported with 20 different mutations.^{69,70} The inheritance pattern is autosomal recessive; heterozygous relatives are not anemic.

Clinical presentation and diagnosis. Patients present with severe, often transfusion-dependent microcytic hypochromic anemia in childhood, which is clinically similar to thalassemia major. Bone marrow smears show ring sideroblasts. Serum ferritin levels and TSAT are increased, even before treatment with erythrocyte transfusions.

Treatment. Symptomatic treatment consists of erythrocyte transfusions and iron chelation. Hematopoietic stem cell transplantation (HSCT) is the only curative treatment; it was performed in 8 of 29 patients and resulted in disease-free survival in 4 patients (follow-up <5 years) (supplemental Data 1).

3B. XLSA with ataxia due to defects in *ABCB7*

Pathogenesis and epidemiology. *ABCB7* (OMIM 300135) on the X-chromosome encodes a protein in the inner membrane of the mitochondria, which is the putative mitochondrial exporter of Fe-S complexes (Figure 1).^{3,71} Defects in *ABCB7* result in disrupted iron metabolism and heme synthesis causing a mild, slightly microcytic, sideroblastic anemia and also cerebellar ataxia.⁷² Sideroblastic anemia with ataxia due to defects in *ABCB7* is a rare, X-linked disease.⁷² Seventeen patients with 4 different pathogenic *ABCB7* defects have been described in case reports, of which 5 were female, which might be explained by skewed X-inactivation. None of the

women showed neurologic defects. There is no apparent genotype-phenotype correlation.

Clinical presentation and diagnosis. The presenting symptom in all male patients was cerebellar ataxia that developed in childhood. Cerebral MRI showed cerebellar hypoplasia in 4 patients. Mild, slightly microcytic sideroblastic anemia was found, usually in the second decade of life. In 10 patients, free erythrocyte protoporphyrin IX (PPIX) was increased. None of the patients showed systemic iron loading.

Treatment. Treatment of the mild anemia was not reported.

3C. XLSA due to defects in *ALAS2*

Pathophysiology and epidemiology. *ALAS2* (OMIM 301300) is located on chromosome X and encodes for ALA synthase 2 (*ALAS2*), an erythroid-specific isoform of the catalytic enzyme involved in heme synthesis in the mitochondria (Figure 1).⁷³

Almost all *ALAS2* defects are missense mutations, most commonly in domains important for catalysis or pyridoxal phosphate (vitamin B6) cofactor binding.⁷⁴ Defects in the binding site of the transcription factor GATA1 in the first intron of *ALAS2* have also recently been described.⁷⁵

ALAS2 defects result in decreased protoporphyrin synthesis and subsequent reduced iron incorporation and heme synthesis, causing microcytic anemia and erythroid mitochondrial iron loading. Mitochondrial iron loading exacerbates the anemia through decreased pyridoxine sensitivity.⁷⁶ Heme deficiency is associated with ineffective erythropoiesis, followed by increased intestinal iron uptake and tissue iron accumulation. XLSA is the most common genetic form of sideroblastic anemia.³ Since Cooley described the first patients with XLSA in 1945,⁷⁷ 61 different pathogenic *ALAS2* defects have been described in 120 nonrelated families.^{78,79} As in most X-linked disorders, most female carriers of XLSA are asymptomatic. However, women with *ALAS2* mutations may be affected because of skewed X-inactivation.⁸⁰ Furthermore, physiologic age-related skewed X-inactivation in hematopoietic stem cells may play a role in the development of XLSA in female carriers with increasing age.⁸¹ Estimates on the prevalence of *ALAS2* defects are not available. Since the phenotype might be mild, underdiagnosis is likely.

Clinical presentation and diagnosis. XLSA is characterized by mild hypochromic, microcytic sideroblastic anemia in combination with systemic iron overload.³ Elevated red cell distribution width has been described in female carriers of the mutation and is ascribed to the presence of 2 erythrocyte populations.⁸² Phenotypic expression of XLSA is highly variable, even in patients with identical mutations.⁸³ Case reports indicate that affected males generally present with symptoms of anemia in the first 2 decades of life or later with either manifestations of anemia or those of parenchymal iron overload. Manifestation among the elderly due to an acquired pyridoxine deficiency is described.⁸⁴

Treatment. The available evidence indicates that initial doses of oral vitamin B6 (pyridoxine) 50 to 200 mg per day are effective in improving anemia and iron overload in all responsive patients with XLSA.⁸⁵ Occasionally, high doses may be considered. Once a response is obtained, evidence suggests that the life-long maintenance dose may be lowered to 10 to 100 mg per day, because doses that are too high may result in neurotoxicity.⁸⁶

Because iron overload may compromise mitochondrial function and hence heme biosynthesis, patients with XLSA should not be considered pyridoxine refractory until iron stores are normalized.⁷⁶ Most patients can be treated with phlebotomy

for iron overload, because the anemia is mild. Hb typically increases, rather than decreases, after reversal of iron overload by phlebotomy.⁷⁶

3D. Sideroblastic anemia due to defects in *GLRX5*

Pathogenesis and epidemiology. *GLRX5* (OMIM 6095588) encodes for the mitochondrial disulfide glutaredoxin-5 (*GLRX5*), which is highly expressed in early erythroid cells and is essential for the biosynthesis of Fe-S clusters (Figure 1).

In vitro data show that in *GLRX5*-deficient erythroblasts, Fe-S cluster production is decreased, and more active iron-responsive protein 1 (IRP1) is present in the cytosol. This reflects a low-iron state of the cell and causes repression of target genes, including *ALAS2*, resulting in reduced heme synthesis, mitochondrial iron accumulation, and increased turnover of ferrochelatase.^{87,88} Sideroblastic anemia due to defects in *GLRX5* is a rare autosomal recessive disease: only 1 male patient has been described.⁸⁹

Clinical presentation and diagnosis. The patient, born from consanguineous parents, presented at age 44 years with type 2 DM and at 60 years with icterus and hepatosplenomegaly. There was a progressive microcytic anemia with increased TSAT, serum ferritin, and iron accumulation in both bone marrow macrophages and erythroblast mitochondria.

Treatment. Treatment with iron chelation and erythrocyte transfusion resulted in an increase of Hb and a decrease in serum ferritin. Pyridoxine supplementation was not effective.

3E. EPP due to defects in *FECH* and GOF mutations in *ALAS2* (XLDPP)

Pathophysiology and epidemiology. EPP comprises 2 variants, EPP and XLDPP, and belongs to the cutaneous porphyrias characterized by accumulation of free PPIX. Autosomal recessive EPP (OMIM 177000) is caused by defects in *FECH* (OMIM 612386), encoding for ferrochelatase in the mitochondria, which is responsible for iron insertion into PPIX to form heme (Figure 1).⁹⁰ The prevalence differs worldwide and mode of inheritance is complex.

XLDPP results from GOF mutations in *ALAS2* (OMIM 301300) leading to PPIX overproduction.⁹¹ XLDPP was found in 29 families worldwide and in ~2% (United Kingdom) to ~10% (United States) of patients with the EPP phenotype.⁹⁰

The diminished ferrochelatase activity in the EPP variant results in reduced heme synthesis, with occasional ringed sideroblasts but without systemic iron overload.⁹² This suggests that the iron absorption and supply in these patients matches the requirement for reduced erythropoiesis.⁹³

Clinical presentation and diagnosis. The variants EPP and XLDPP are clinically indistinguishable. The predominant clinical presentation is painful photosensitivity, erythema, and stinging and burning of sunlight-exposed skin beginning in childhood. In patients with severe symptoms, the liver is affected.⁹⁴ Twenty to 60% of the patients show a microcytic anemia, with a mean decrease in Hb in adult male patients of 1.2 g/dL and reduced iron stores.⁹²

Fluorescent erythrocytes can be seen in a fresh, unstained blood smear. FPP is found in plasma and erythrocytes. ZnPP is typically increased in XLDPP due to the relative iron deficiency for the amount of PPIX.⁹⁴

Treatment. Since anemia is mild, its treatment is not warranted.⁹⁴ Therapy for EPP is focused on minimizing the harmful effects of exposure to sunlight and on managing the hepatotoxic effects of protoporphyrin.

3F. CEP due to defects in *UROS* or *GATA1*

Pathogenesis and epidemiology. *UROS* (OMIM 606938) encodes uroporphyrinogen III synthase, the fourth enzyme of the heme biosynthetic pathway. CEP (OMIM 263700) is a rare autosomal genetic disease caused by defects in *UROS*, leading to erythroid accumulation of nonphysiologic uroporphyrin I and coproporphyrin I.⁹⁴ Reduced red cell survival due to excess porphyrin in erythrocytes contributes to hemolytic anemia found in most patients with CEP.⁹⁵ To date, approximately 45 *UROS* mutations have been described in >200 individuals.⁹⁶ An X-linked variant of CEP (OMIM 314050) caused by a mutation in *GATA1* (OMIM 305371) on the X-chromosome has been reported for 1 patient.⁹⁷ *GATA1* regulates expression of *UROS* in erythroblasts.

Clinical presentation and diagnosis. CEP typically presents with passage of red urine shortly after birth. Lifelong bullous cutaneous photosensitivity to visible light starts in early infancy, leading to scarring with photomutilation.⁹⁴ Other manifestations include hypertrichosis, erythrodontia, osteoporosis, and corneal ulceration with scarring. Age of onset and severity of CEP are both highly variable.⁹⁸ In a retrospective study of 29 CEP patients, 66% suffered from chronic hemolytic anemia with variable severity.⁹⁸ Iron parameters are not described in these patients.

The patient with CEP caused by the *GATA1* defect had a severe hypochromic microcytic hemolytic anemia mimicking the phenotype of thalassemia intermedia, in combination with thrombocytopenia.⁹⁷ Biochemically, CEP patients have uroporphyrin and coproporphyrin accumulation in erythrocytes, plasma, urine, and feces and decreased *UROS* activity in erythrocytes.⁹⁴

Treatment. Allogeneic HSCT is the only curative option for CEP.⁹⁹ Chronic erythrocyte transfusion in severe cases to suppress erythropoiesis is described.¹⁰⁰ Protection of eyes and skin from sunlight is essential, and minor skin trauma should be avoided.¹⁰¹

Conclusions

We have provided clinical guidelines on orphan diseases, of which many aspects are still unknown. Consequently, the level of evidence for the management of these disorders is relatively low. We therefore

recommend that centers of excellence that have expertise with these diseases join forces to identify new mechanisms, biomarkers, and treatments and to optimize management of patients with these diseases. Until more evidence is available, these guidelines can be used to assist clinicians and patients in their understanding, diagnosis, and management of microcytic genetic anemias of iron metabolism or heme synthesis.

Acknowledgments

We thank M. Wessels, literature specialist, for her help in the systematic literature review of the various databases.

This work was supported by a grant from the Quality Foundation Funds Medical Specialists of The Netherlands Association of Medical Specialists, project number 7387043.

Authorship

Contribution: A.E.D., R.A.P.R., P.P.T.B., N.D., L.T.V., N.V.A.M.K., R.T., and D.W.S. were members of the working group, made literature and case tables, drafted, discussed, and finalized the guidelines, and edited the manuscript; T.v.B. served as advisor and provided support in the use of the methodology for guideline development; and D.W.S. initiated and coordinated the project and acquired funding. All authors approved the final version of the manuscript.

Conflict-of-interest disclosure: D.W.S. is medical director of the www.hepcidinanalysis.com initiative that serves the scientific and medical community with hepcidin measurements on a fee-for-service basis. She is an employee of the Radboud University Medical Centre, which offers genetic testing for the genes described in the current guideline (<http://www.umcn.nl/Informatievoorverwijzers/Genoemdiagnostiek/en/Pages/default.aspx>). The remaining authors declare no competing financial interests.

Correspondence: Dorine W. Swinkels, Department of Laboratory Medicine, Laboratory of Genetic, Endocrine and Metabolic Diseases (830), Radboud University Medical Center, PO Box 9101, 6500 HB Nijmegen, The Netherlands; e-mail: Dorine.Swinkels@radboudumc.nl.

References

- Iolascon A, De Falco L, Beaumont C. Molecular basis of inherited microcytic anemia due to defects in iron acquisition or heme synthesis. *Haematologica*. 2009;94(3):395-408.
- van Rooijen KL, Raymakers RA, Cuijpers ML, Brons PP, Janssen MC, Swinkels DW. New causes of microcytic anaemia: hereditary disorders of iron homeostasis [in Dutch]. *Ned Tijdschr Geneesk*. 2010;154:A1039.
- Camaschella C. Recent advances in the understanding of inherited sideroblastic anaemia. *Br J Haematol*. 2008;143(1):27-38.
- Fleming MD. Congenital sideroblastic anemias: iron and heme lost in mitochondrial translation. *Hematology (Am Soc Hematol Educ Program)*. 2011;2011:525-531.
- Camaschella C. Hereditary sideroblastic anemias: pathophysiology, diagnosis, and treatment. *Semin Hematol*. 2009;46(4):371-377.
- Donovan A, Brownlie A, Zhou Y, et al. Positional cloning of zebrafish ferroportin1 identifies a conserved vertebrate iron exporter. *Nature*. 2000;403(6771):776-781.
- Kautz L, Jung G, Nemeth E, Ganz T. The erythroid factor erythroferrone and its role in iron homeostasis [abstract]. *Blood*. 2013;122(21). Abstract 4.
- Borry P, Goffin T, Nys H, Dierickx K. Attitudes regarding predictive genetic testing in minors: a survey of European clinical geneticists. *Am J Med Genet C Semin Med Genet*. 2008;148C(1):78-83.
- Godard B, Hurlimann T, Letendre M, Egalité N; INHERIT BRCA. Guidelines for disclosing genetic information to family members: from development to use. *Fam Cancer*. 2006;5(1):103-116.
- Mol BW, van Triest B, Arends AJ, et al. Kwaliteitskoepel medische specialisten. http://www.kwaliteitskoepel.nl/assets/structured-files/2012/Richtlijn+2_Opmaak+5.pdf. Accessed January 9, 2014.
- Brouwers MC, Kho ME, Browman GP, et al; AGREE Next Steps Consortium. AGREE II: advancing guideline development, reporting and evaluation in health care. *CMAJ*. 2010;182(18):E839-E842.
- Atkins D, Best D, Briss PA, et al; GRADE Working Group. Grading quality of evidence and strength of recommendations. *BMJ*. 2004;328(7454):1490.
- Guyatt GH, Oxman AD, Vist GE, et al; GRADE Working Group. GRADE: an emerging consensus on rating quality of evidence and strength of recommendations. *BMJ*. 2008;336(7650):924-926.
- Hentze MW, Muckenthaler MU, Galy B, Camaschella C. Two to tango: regulation of Mammalian iron metabolism. *Cell*. 2010;142(1):24-38.
- Grantham-McGregor S, Ani C. A review of studies on the effect of iron deficiency on cognitive development in children. *J Nutr*. 2001;131(2S-2):649S-666S.

16. Fleming RE, Ponka P. Iron overload in human disease. *N Engl J Med*. 2012;366(4):348-359.
17. Du X, She E, Gelbart T, et al. The serine protease TMPRSS6 is required to sense iron deficiency. *Science*. 2008;320(5879):1088-1092.
18. Silvestri L, Guillem F, Pagani A, et al. Molecular mechanisms of the defective hepcidin inhibition in TMPRSS6 mutations associated with iron-refractory iron deficiency anemia. *Blood*. 2009;113(22):5605-5608.
19. Finberg KE, Heeney MM, Campagna DR, et al. Mutations in TMPRSS6 cause iron-refractory iron deficiency anemia (IRIDA). *Nat Genet*. 2008;40(5):569-571.
20. Benyamin B, Ferreira MA, Willemsen G, et al. Common variants in TMPRSS6 are associated with iron status and erythrocyte volume. *Nat Genet*. 2009;41(11):1173-1175.
21. Chambers JC, Zhang W, Li Y, et al. Genome-wide association study identifies variants in TMPRSS6 associated with hemoglobin levels. *Nat Genet*. 2009;41(11):1170-1172.
22. Melis MA, Cau M, Congiu R, et al. A mutation in the TMPRSS6 gene, encoding a transmembrane serine protease that suppresses hepcidin production, in familial iron deficiency anemia refractory to oral iron. *Haematologica*. 2008;93(10):1473-1479.
23. Hershko C, Camaschella C. How I treat unexplained refractory iron deficiency anemia. *Blood*. 2014;123(3):326-333.
24. Heeney MM, Campagna DR, Westerman M, Fleming MD. The clinical and genetic spectrum of TMPRSS6 mutations leading to inappropriate hepcidin expression and iron refractory iron deficiency anemia (IRIDA) [abstract]. *Blood*. 2009;114(22). Abstract 629.
25. Beutler E, Van Geet C, te Loo DM, et al. Polymorphisms and mutations of human TMPRSS6 in iron deficiency anemia. *Blood Cells Mol Dis*. 2010;44(1):16-21.
26. Cau M, Galanello R, Giagu N, Melis MA. Responsiveness to oral iron and ascorbic acid in a patient with IRIDA. *Blood Cells Mol Dis*. 2012;48(2):121-123.
27. Locatelli F, Bárány P, Covic A, et al; ERA-EDTA ERBP Advisory Board. Kidney Disease: Improving Global Outcomes guidelines on anaemia management in chronic kidney disease: a European Renal Best Practice position statement. *Nephrol Dial Transplant*. 2013;28(6):1346-1359.
28. Lehmborg K, Grosse R, Muckenthaler MU, et al. Administration of recombinant erythropoietin alone does not improve the phenotype in iron refractory iron deficiency anemia patients. *Ann Hematol*. 2013;92(3):387-394.
29. Ramsay AJ, Quesada V, Sanchez M, et al. Matriptase-2 mutations in iron-refractory iron deficiency anemia patients provide new insights into protease activation mechanisms. *Hum Mol Genet*. 2009;18(19):3673-3683.
30. Kroot JJ, Tjalsma H, Fleming RE, Swinkels DW. Hepcidin in human iron disorders: diagnostic implications. *Clin Chem*. 2011;57(12):1650-1669.
31. Wallace DF, Harris JM, Subramaniam VN. Functional analysis and theoretical modeling of ferroportin reveals clustering of mutations according to phenotype. *Am J Physiol Cell Physiol*. 2010;298(1):C75-C84.
32. De Domenico I, Ward DM, Langelier C, et al. The molecular mechanism of hepcidin-mediated ferroportin down-regulation. *Mol Biol Cell*. 2007;18(7):2569-2578.
33. Pietrangelo A. The ferroportin disease. *Blood Cells Mol Dis*. 2004;32(1):131-138.
34. Camaschella C, Poggiali E. Rare types of genetic hemochromatosis. *Acta Haematol*. 2009;122(2-3):140-145.
35. Mayr R, Janecke AR, Schranz M, et al. Ferroportin disease: a systematic meta-analysis of clinical and molecular findings. *J Hepatol*. 2010;53(5):941-949.
36. Nemeth E. Ferroportin mutations: a tale of two phenotypes. *Blood*. 2005;105(10):3763-3764.
37. Rice AE, Mendez MJ, Hokanson CA, Rees DC, Björkman PJ. Investigation of the biophysical and cell biological properties of ferroportin, a multipass integral membrane protein iron exporter. *J Mol Biol*. 2009;386(3):717-732.
38. Blanc B, Finch CA, Hallberg L, et al. Nutritional anemias. Report of a WHO Scientific Group. *WHO Tech Rep Ser*. 1968;405:1-40.
39. Harris ZL, Durlay AP, Man TK, Gitlin JD. Targeted gene disruption reveals an essential role for ceruloplasmin in cellular iron efflux. *Proc Natl Acad Sci USA*. 1999;96(19):10812-10817.
40. De Domenico I, Ward DM, di Patti MC, et al. Ferroxidase activity is required for the stability of cell surface ferroportin in cells expressing GPI-ceruloplasmin. *EMBO J*. 2007;26(12):2823-2831.
41. Miyajima H, Kohno S, Takahashi Y, Yonekawa O, Kanno T. Estimation of the gene frequency of aceruloplasminemia in Japan. *Neurology*. 1999;53(3):617-619.
42. McNeill A, Pandolfo M, Kuhn J, Shang H, Miyajima H. The neurological presentation of ceruloplasmin gene mutations. *Eur Neurol*. 2008;60(4):200-205.
43. Bosio S, De Gobbi M, Roetto A, et al. Anemia and iron overload due to compound heterozygosity for novel ceruloplasmin mutations. *Blood*. 2002;100(6):2246-2248.
44. Roberti Mdo R, Borges Filho HM, Gonçalves CH, Lima FL. Aceruloplasminemia: a rare disease - diagnosis and treatment of two cases. *Rev Bras Hematol Hemoter*. 2011;33(5):389-392.
45. Suzuki Y, Yoshida K, Aburakawa Y, et al. Effectiveness of oral iron chelator treatment with deferasirox in an aceruloplasminemia patient with a novel ceruloplasmin gene mutation. *Intern Med*. 2013;52(13):1527-1530.
46. Finkenstedt A, Wolf E, Höfner E, et al. Hepatic but not brain iron is rapidly chelated by deferasirox in aceruloplasminemia due to a novel gene mutation. *J Hepatol*. 2010;53(6):1101-1107.
47. Kuhn J, Bewermeyer H, Miyajima H, Takahashi Y, Kuhn KF, Hoogenraad TU. Treatment of symptomatic heterozygous aceruloplasminemia with oral zinc sulphate. *Brain Dev*. 2007;29(7):450-453.
48. Skidmore FM, Drago V, Foster P, Schmalfluss IM, Heilman KM, Streiff RR. Aceruloplasminemia with progressive atrophy without brain iron overload: treatment with oral chelation. *J Neurol Neurosurg Psychiatry*. 2008;79(4):467-470.
49. Logan JI, Harveyson KB, Wisdom GB, Hughes AE, Archbold GP. Hereditary caeruloplasmin deficiency, dementia and diabetes mellitus. *QJM*. 1994;87(11):663-670.
50. Yazaki M, Yoshida K, Nakamura A, et al. A novel splicing mutation in the ceruloplasmin gene responsible for hereditary ceruloplasmin deficiency with hemosiderosis. *J Neurol Sci*. 1998;156(1):30-34.
51. Beutler E, Gelbart T, Lee P, Trevino R, Fernandez MA, Fairbanks VF. Molecular characterization of a case of atransferrinemia. *Blood*. 2000;96(13):4071-4074.
52. Heilmeyer L, Keller W, Vivell O, et al. Congenital atransferrinemia in a 7-year-old girl [in German]. *Dtsch Med Wochenschr*. 1961;86:1745-1751.
53. Hayashi A, Wada Y, Suzuki T, Shimizu A. Studies on familial hypotransferrinemia: unique clinical course and molecular pathology. *Am J Hum Genet*. 1993;53(1):201-213.
54. Trombini P, Coliva T, Nemeth E, et al. Effects of plasma transfusion on hepcidin production in human congenital hypotransferrinemia. *Haematologica*. 2007;92(10):1407-1410.
55. Bartnikas TB, Andrews NC, Fleming MD. Transferrin is a major determinant of hepcidin expression in hypotransferrinemic mice. *Blood*. 2011;117(2):630-637.
56. Shamsian BS, Rezaei N, Arzani MT, Alavi S, Khojasteh O, Eghbali A. Severe hypochromic microcytic anemia in a patient with congenital atransferrinemia. *Pediatr Hematol Oncol*. 2009;26(5):356-362.
57. Hamill RL, Woods JC, Cook BA. Congenital atransferrinemia. A case report and review of the literature. *Am J Clin Pathol*. 1991;96(2):215-218.
58. Hromec A, Payer J Jr, Killinger Z, Rybár I, Rovenský J. Congenital atransferrinemia [in German]. *Dtsch Med Wochenschr*. 1994;119(18):663-666.
59. Goldwurm S, Casati C, Venturi N, et al. Biochemical and genetic defects underlying human congenital hypotransferrinemia. *Hematol J*. 2000;1(6):390-398.
60. Canonne-Hergaux F, Zhang AS, Ponka P, Gros P. Characterization of the iron transporter DMT1 (NRAMP2/DCT1) in red blood cells of normal and anemic mk/mk mice. *Blood*. 2001;98(13):3823-3830.
61. Fleming MD, Trenor CC III, Su MA, et al. Microcytic anaemia mice have a mutation in Nramp2, a candidate iron transporter gene. *Nat Genet*. 1997;16(4):383-386.
62. Touret N, Martin-Orozco N, Paroutis P, et al. Molecular and cellular mechanisms underlying iron transport deficiency in microcytic anemia. *Blood*. 2004;104(5):1526-1533.
63. Priwitzerova M, Pospisilova D, Prchal JT, et al. Severe hypochromic microcytic anemia caused by a congenital defect of the iron transport pathway in erythroid cells. *Blood*. 2004;103(10):3991-3992.
64. Iolascon A, Camaschella C, Pospisilova D, Piscopo C, Tchernia G, Beaumont C. Natural history of recessive inheritance of DMT1 mutations. *J Pediatr*. 2008;152(1):136-139.
65. Iolascon A, d'Apolito M, Servedio V, Cimmino F, Piga A, Camaschella C. Microcytic anemia and hepatic iron overload in a child with compound heterozygous mutations in DMT1 (SCL11A2). *Blood*. 2006;107(1):349-354.
66. Ohgami RS, Campagna DR, Greer EL, et al. Identification of a ferrireductase required for efficient transferrin-dependent iron uptake in erythroid cells. *Nat Genet*. 2005;37(11):1264-1269.
67. Ohgami RS, Campagna DR, Antiochos B, et al. nm1054: a spontaneous, recessive, hypochromic, microcytic anemia mutation in the mouse. *Blood*. 2005;106(10):3625-3631.
68. Grandchamp B, Hetet G, Kannengiesser C, et al. A novel type of congenital hypochromic anemia associated with a nonsense mutation in the STEAP3/TSAP6 gene. *Blood*. 2011;118(25):6660-6666.
69. Guernsey DL, Jiang H, Campagna DR, et al. Mutations in mitochondrial carrier family gene SLC25A38 cause nonsyndromic autosomal

- recessive congenital sideroblastic anemia. *Nat Genet.* 2009;41(6):651-653.
70. Kannengiesser C, Sanchez M, Sweeney M, et al. Missense SLC25A38 variations play an important role in autosomal recessive inherited sideroblastic anemia. *Haematologica.* 2011; 96(6):808-813.
 71. Taketani S, Kakimoto K, Ueta H, Masaki R, Furukawa T. Involvement of ABC7 in the biosynthesis of heme in erythroid cells: interaction of ABC7 with ferrochelatase. *Blood.* 2003;101(8):3274-3280.
 72. Allikmets R, Raskind WH, Hutchinson A, Schueck ND, Dean M, Koeller DM. Mutation of a putative mitochondrial iron transporter gene (ABC7) in X-linked sideroblastic anemia and ataxia (XLSA/A). *Hum Mol Genet.* 1999;8(5): 743-749.
 73. Bottomley SS, Healy HM, Brandenburg MA, May BK. 5-Aminolevulinic synthase in sideroblastic anemias: mRNA and enzyme activity levels in bone marrow cells. *Am J Hematol.* 1992;41(2): 76-83.
 74. Astner I, Schulze JO, van den Heuvel J, Jahn D, Schubert WD, Heinz DW. Crystal structure of 5-aminolevulinic synthase, the first enzyme of heme biosynthesis, and its link to XLSA in humans. *EMBO J.* 2005;24(18): 3166-3177.
 75. Campagna DR, de Bie CI, Schmitz-Abe K, et al. X-linked sideroblastic anemia due to ALAS2 intron 1 enhancer element GATA-binding site mutations. *Am J Hematol.* 2014; 89(3):315-319.
 76. Cotter PD, May A, Li L, et al. Four new mutations in the erythroid-specific 5-aminolevulinic synthase (ALAS2) gene causing X-linked sideroblastic anemia: increased pyridoxine responsiveness after removal of iron overload by phlebotomy and coinheritance of hereditary hemochromatosis. *Blood.* 1999;93(5): 1757-1769.
 77. Cooley TB. A severe type of hereditary anemia with elliptocytosis. Interesting sequence of splenectomy. *Am J Med Sci.* 1945;209:561-568.
 78. Bergmann AK, Campagna DR, McLoughlin EM, et al. Systematic molecular genetic analysis of congenital sideroblastic anemia: evidence for genetic heterogeneity and identification of novel mutations. *Pediatr Blood Cancer.* 2010;54(2): 273-278.
 79. Ducamp S, Kannengiesser C, Touati M, et al. Sideroblastic anemia: molecular analysis of the ALAS2 gene in a series of 29 probands and functional studies of 10 missense mutations. *Hum Mutat.* 2011;32(6):590-597.
 80. Aivado M, Gattermann N, Rong A, et al. X-linked sideroblastic anemia associated with a novel ALAS2 mutation and unfortunate skewed X-chromosome inactivation patterns. *Blood Cells Mol Dis.* 2006;37(1):40-45.
 81. Cazzola M, May A, Bergamaschi G, Cerani P, Rosti V, Bishop DF. Familial-skewed X-chromosome inactivation as a predisposing factor for late-onset X-linked sideroblastic anemia in carrier females. *Blood.* 2000;96(13): 4363-4365.
 82. Harris JW, Danish EH, Brittenham GM, McLaren CE. Pyridoxine responsive hereditary sideroblastic erythropoiesis and iron overload: two microcytic subpopulations in the affected male, one normocytic and one microcytic subpopulation in the obligate female carrier. *Am J Hematol.* 1993;42(4): 400-401.
 83. Barton JC, Lee PL. Disparate phenotypic expression of ALAS2 R452H (nt 1407 G → A) in two brothers, one with severe sideroblastic anemia and iron overload, hepatic cirrhosis, and hepatocellular carcinoma. *Blood Cells Mol Dis.* 2006;36(3):342-346.
 84. Furuyama K, Harigae H, Kinoshita C, et al. Late-onset X-linked sideroblastic anemia following hemodialysis. *Blood.* 2003;101(11): 4623-4624.
 85. Cotter PD, Rucknagel DL, Bishop DF. X-linked sideroblastic anemia: identification of the mutation in the erythroid-specific delta-aminolevulinic synthase gene (ALAS2) in the original family described by Cooley. *Blood.* 1994; 84(11):3915-3924.
 86. Camaschella C. Treating iron overload. *N Engl J Med.* 2013;368(24):2325-2327.
 87. Ye H, Jeong SY, Ghosh MC, et al. Glutaredoxin 5 deficiency causes sideroblastic anemia by specifically impairing heme biosynthesis and depleting cytosolic iron in human erythroblasts. *J Clin Invest.* 2010;120(5):1749-1761.
 88. Ye H, Rouault TA. Erythropoiesis and iron sulfur cluster biogenesis. *Adv Hematol.* 2010;2010: 329394.
 89. Camaschella C, Campanella A, De Falco L, et al. The human counterpart of zebrafish shiraz shows sideroblastic-like microcytic anemia and iron overload. *Blood.* 2007; 110(4):1353-1358.
 90. Balwani M, Doheny D, Bishop DF, et al; Porphyrias Consortium of the National Institutes of Health Rare Diseases Clinical Research Network. Loss-of-function ferrochelatase and gain-of-function erythroid-specific 5-aminolevulinic synthase mutations causing erythropoietic protoporphyria and x-linked protoporphyria in North American patients reveal novel mutations and a high prevalence of X-linked protoporphyria. *Mol Med.* 2013;19:26-35.
 91. Whitley SD, Mason NG, Holme SA, Anstey AV, Elder GH, Badminton MN. Molecular epidemiology of erythropoietic protoporphyria in the U.K. *Br J Dermatol.* 2010;162(3): 642-646.
 92. Holme SA, Worwood M, Anstey AV, Elder GH, Badminton MN. Erythropoiesis and iron metabolism in dominant erythropoietic protoporphyria. *Blood.* 2007;110(12):4108-4110.
 93. Delaby C, Lyoumi S, Ducamp S, et al. Excessive erythrocyte PPIX influences the hematologic status and iron metabolism in patients with dominant erythropoietic protoporphyria. *Cell Mol Biol (Noisy-le-grand).* 2009;55(1):45-52.
 94. Balwani M, Desnick RJ. The porphyrias: advances in diagnosis and treatment. *Hematology (Am Soc Hematol Educ Program).* 2012;2012:19-27.
 95. Fritsch C, Bolsen K, Ruzicka T, Goerz G. Congenital erythropoietic porphyria. *J Am Acad Dermatol.* 1997;36(4):594-610.
 96. Solis C, Aizencang GI, Astrin KH, Bishop DF, Desnick RJ. Uroporphyrinogen III synthase erythroid promoter mutations in adjacent GATA1 and CP2 elements cause congenital erythropoietic porphyria. *J Clin Invest.* 2001; 107(6):753-762.
 97. Phillips JD, Steensma DP, Pulsipher MA, Spangrude GJ, Kushner JP. Congenital erythropoietic porphyria due to a mutation in GATA1: the first trans-acting mutation causative for a human porphyria. *Blood.* 2007;109(6):2618-2621.
 98. Katugampola RP, Badminton MN, Finlay AY, et al. Congenital erythropoietic porphyria: a single-observer clinical study of 29 cases. *Br J Dermatol.* 2012;167(4):901-913.
 99. Martinez Peinado C, Díaz de Heredia C, To-Figueras J, et al. Successful treatment of congenital erythropoietic porphyria using matched unrelated hematopoietic stem cell transplantation. *Pediatr Dermatol.* 2013;30(4):484-489.
 100. Piomelli S, Poh-Fitzpatrick MB, Seaman C, Skolnick LM, Berdon WE. Complete suppression of the symptoms of congenital erythropoietic porphyria by long-term treatment with high-level transfusions. *N Engl J Med.* 1986;314(16): 1029-1031.
 101. Desnick RJ, Astrin KH. Congenital erythropoietic porphyria: advances in pathogenesis and treatment. *Br J Haematol.* 2002;117(4):779-795.